

H2O
Living

H2O *Living* Kefalas
Kefalas-Crete



2025



The plot is located in Kefalas, a small village in the Apokoronas region, near one of the main tourist centers of Crete, Chania.



5 minutes walk



5 minutes walk



Health Center
10 minutes by car



Airopoort
50 min by car



Vamos village 8
min by car



Post
10 minutes by car



School
10 minutes by car



Bank
10 minutes by car



Famous beaches 10
min by car



Panoramic view
from any villa



About Villas

H2O *living* Villas is a complex of 4 villas. Each villa embraces a large terrace with infinity pool, ideal for the Mediterranean climate

Facts

Design 2024

Plot Area 5 234,48 sq.m. 4 villas
with panoramic sea view

Car port in each villa



Villa # 1

Plot size -624 m2

Property size -120 m2

Villa # 2

Plot size - 550 m2

Property size -120 m2

Villa # 3

Plot size - 678 m2

Property size -127 m2

Villa # 4

Plot size - 886 m2

Property size -127 m2

All villas have a panoramic sea views due to their location on different elevations.



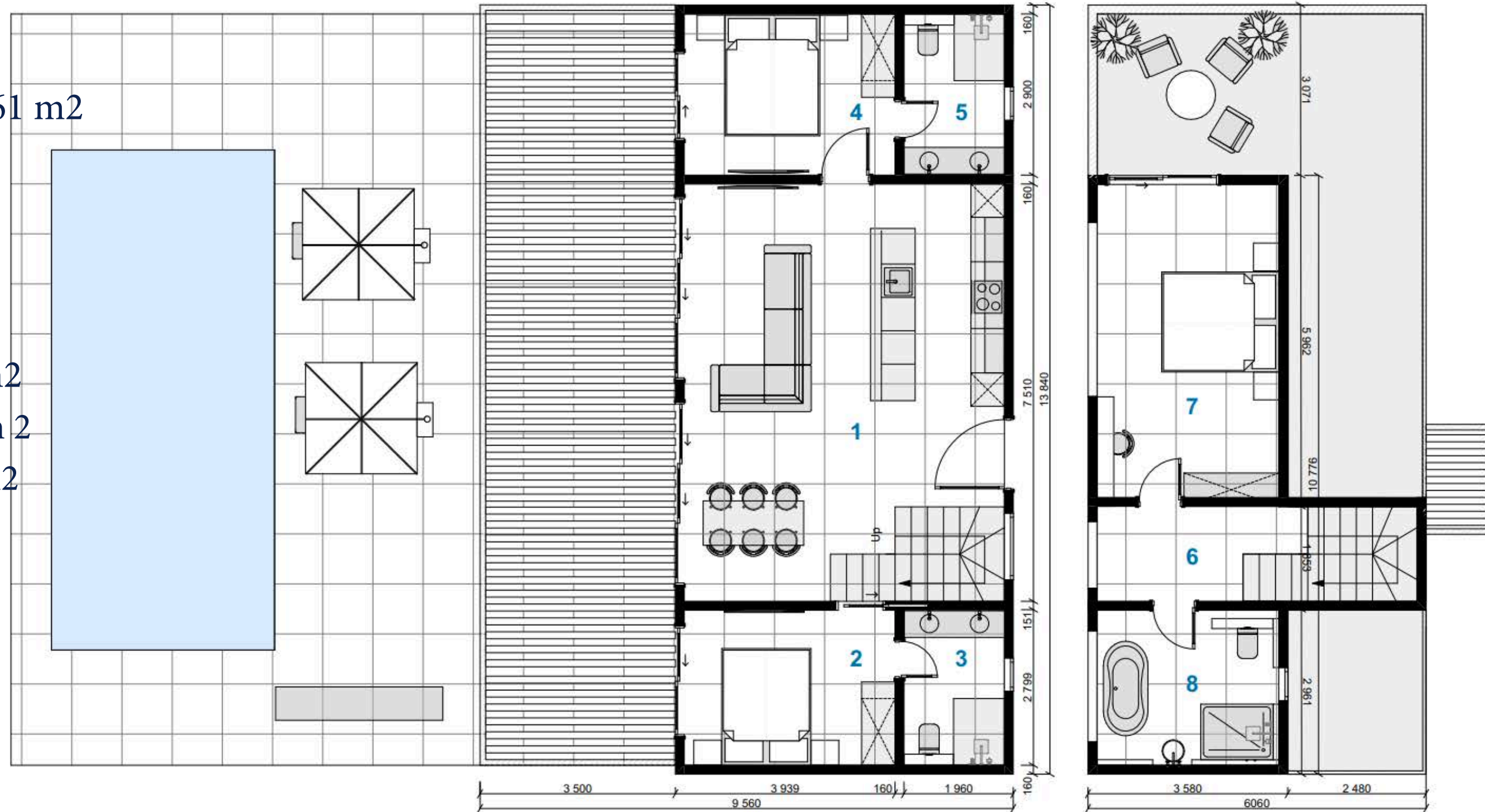
Double-level villa



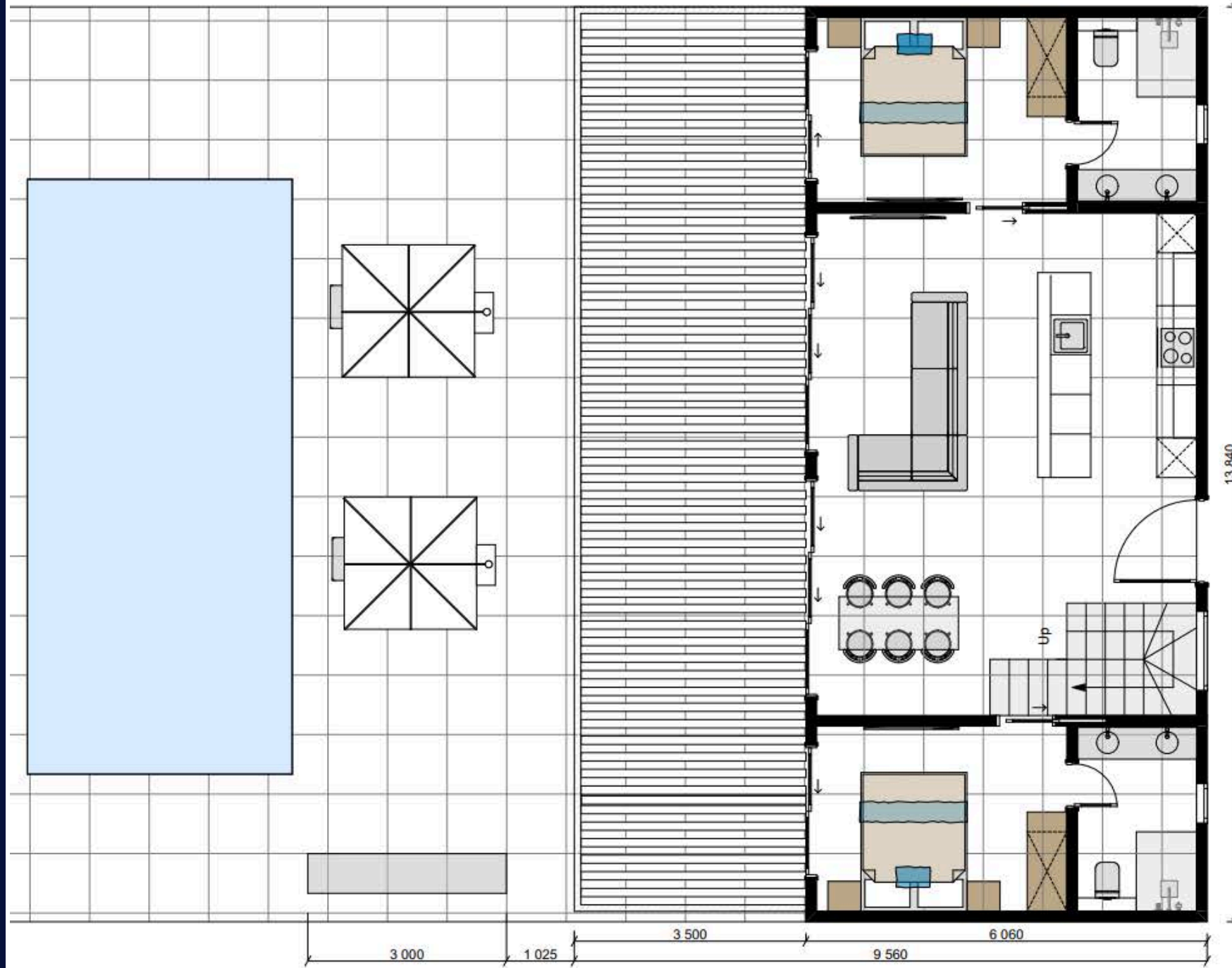
Layout double-level villa

Areas table plot

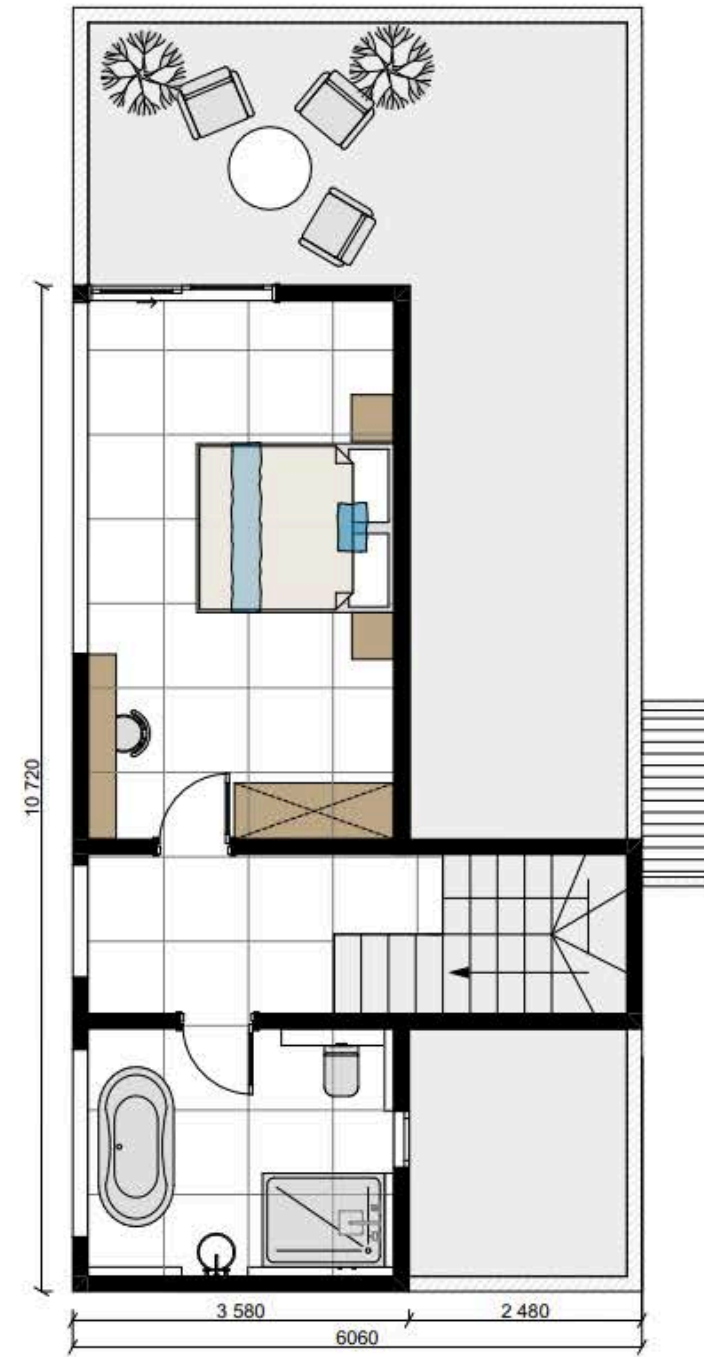
1. Dining /lounge area - 43,61 m²
2. Bedroom - 11,10 m²
3. Bathroom - 4,49 m²
4. Bedroom - 10,58 m²
5. Bathroom - 5,04 m²
6. Upstairs hallway - 9,76 m²
7. Master bedroom - 18,71 m²
8. Master bathroom - 9,13 m²
8. Roof terrace - 10,60 m²
9. Infinity pool - 36 m²



Layout 1st floor



Layout 2nd floor



Double-level villa

127 sqm

Bedroom -3

Bathroom-3

Lounge area-1

Closet -3

Roof terrace - 1

Terrace with outdoor kitchen

The infinity pool

Panoramic sea views

Car port

Double-level **H2O** Living Villas are international design and fully furnished. Built-in kitchens complete with all appliances.













	Main Characteristics	
1	Outdoor kitchen with BBQ area	√
2	The infinity pool	√
3	Panoramic sea views	√
4	Glass fence on terrace	√
5	Roof terrace	√
	Heating / Cooling	
6	Building energy efficiency rating A +	√
7	Autonomous Cooling/ Heating system	√
8	Safety windows and sliding doors with triplex glass and mosquito nets	√

	Furniture	
9	Kitchen cabinetries, island, dinning set	√
10	Wardrobes	√
3	Sofas, armchairs and beds are easy to clean and stain resistant	√
4	Outdoor sofa + dinning set	√
5	Outdoor kitchen with BBQ and fridge	√
	Additional Characteristics	
6	Appliances	√
7	Pivot front door	√
8	Large-format tiles anti-slip coefficient R 10-11	√
9	Sanitary ware	√